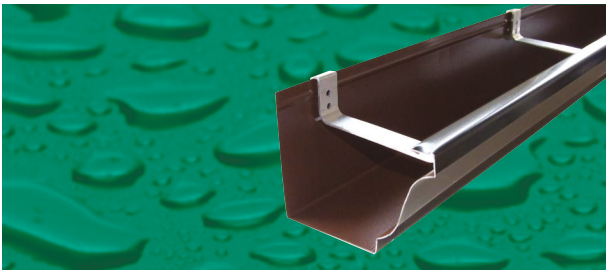


Aluminium
Rainwater Systems



A well designed rainwater system is essential for all buildings. Aluminium rainwater products are lightweight, corrosion resistant, low maintenance and aesthetically pleasing to the eye.



Seamless Guttering

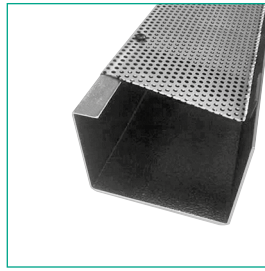
Available in a classic Ogee gutter profile and can be installed in continuous lengths up to 35m with no joints. Hidden brackets concealed inside the gutter provide extra strength with the smooth appearance and clean lines making it an ideal choice for traditional or modern properties alike.

We supply only or supply and fit seamless gutters; in the North West of England. Supply only is usually ex works but in certain cases we will bring the gutter to your site. Lengths of up to 35m can be fitted in one piece but of course this depends on site conditions, even where there is a join we have our own in house designed aluminium joiner that not only works superbly but also looks the part.



Aluminium Leaf Guard

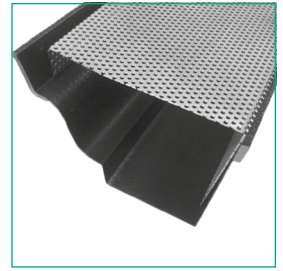
Ingenious leaf guard has been purposely developed to solve the ongoing problems caused by gutter blockages. Once leaf guard is installed you will not have to worry about cleaning your gutters out as often as you currently need to.



Box Leaf Guard



Half Round Leaf Guard



Ogee Leaf Guard



Downpipes

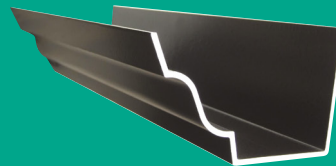
Downpipes are the most visible part of any rainwater system. Decorative features can be added, particular to heritage buildings to emulate older style cast iron. Modern downpipes can be utilised as a feature of the building by matching the colour of the building. Available round or square.

Hoppers

Hoppers are a decorative feature on any building. We can provide a range of sizes and styles many of which are based on the original Victorian and Edwardian designs.

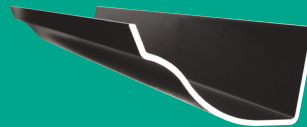
Aluminium Rainwater Solutions

With a wealth of knowledge and expertise, GMD Pennine offer a wide range of high performance aluminium rainwater products to meet your requirements. Traditional or modern, classical or contemporary we have the right solution for your building.



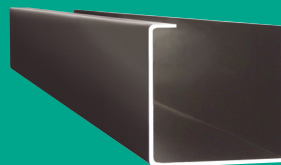
No.46 Ogee Gutter (cast – extruded – seamless)

A decorative ogee gutter profile is a classic design which works well on all types of buildings.



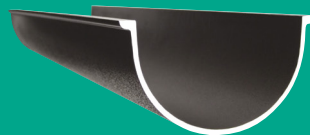
Victorian Ogee (cast)

Designed to emulate cast iron profiles. This traditional profile is ideal for heritage style buildings or to reflect the traditional style on a new building.



Box Gutter (extruded)

A modern gutter profile designed to provide a sleek contemporary look to suit all types of buildings alike. Also can be manufactured to clients' specific requirements.



Deep Beaded Half Round Gutter (cast – extruded)

Traditional half round with attractive beaded edges. The deep profile of the gutter allows an increased flow capacity. Ideal for the larger building.



Beaded Half Round Gutter (cast – extruded)

Traditional half round gutter with attractive beaded edges. Ideal choice for smaller buildings.



Half Round Gutter (cast – extruded)

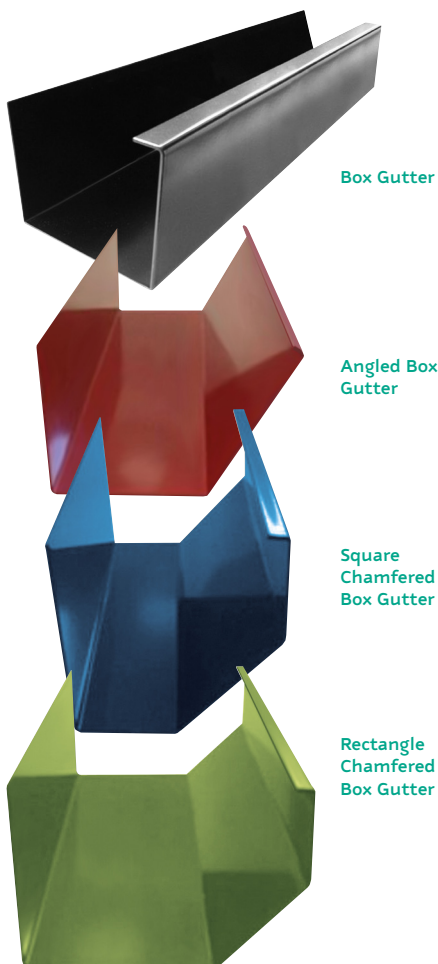
Economical half round gutter profile. Ideal choice for smaller buildings.



Aluminium rainwater systems are the first choice for designers, architects and engineers as they combine functionality and cost effectiveness with forward looking form and design. The superior recyclability, strength, durability and elegant characteristics of aluminium make it the ideal sustainable material.

Aluminium extrusions

GMD Pennine fabricate and manufacture Box Guttering, Aluminium Flashings and Cladding in house, with our own facilities. Guaranteeing that your product will be made by the experts.



Aluminium Flashings and Cladding

Wall Copings

Our complementary wall coping system is one of the most effective and economic means of protecting, weather proofing, new and existing wall structures. It also provides a very attractive, cosmetic improvement to the line of any building.

Soffits

Can be used behind architectural guttering, or can form an integrated eaves/soffit feature incorporating concealed guttering.

Fascias

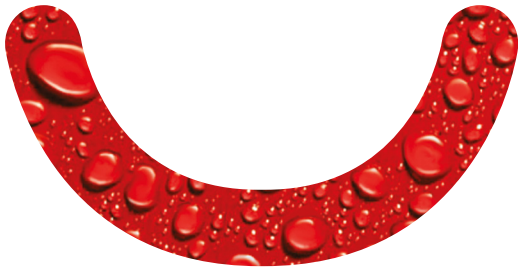
Fabricated from 2mm thick aluminum alloy sheet, pressed to shape to suit individual project requirements.

Aluminium
Coping System



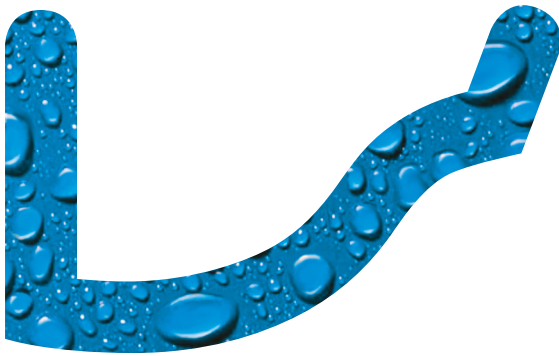
Aluminium
Fascia & Soffit System





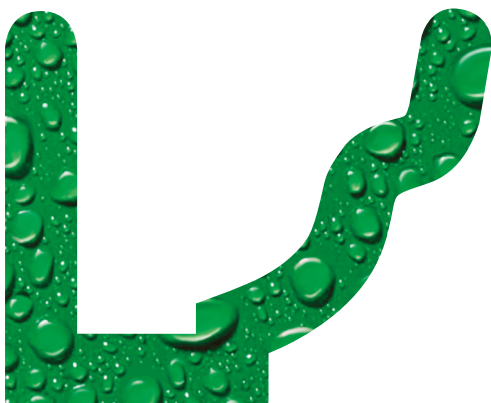
Corrosion Resistance

The natural coating of aluminium oxide provides an effective barrier against atmospheric conditions and chemicals.



Maintenance Free

Offers significant cost savings over other materials that require regular painting.



Recyclable

Once made, aluminium can be recycled time after time saving up to 95% of the energy needed to produce the primary product.

Installation services

GMD Pennine supply and install all types of rainwater products throughout the United Kingdom. We also offer an installation service by our very own experienced team of fitters across the United Kingdom.



Controlling the rain

GMD Pennine Limited was established over 20 years ago and has become widely recognised as a market leader in aluminium rainwater products.

GMD manufacture, supply and distribute high quality cast, extruded and seamless aluminium rainwater systems throughout the UK. We also offer an installation service by our experienced team of fitters across the north west of England.

GMD have a valued client base consisting of local authority, building contractors, trade installers and domestic clients.

See our complete range of
products or buy online

www.gmdpennine.co.uk

Colour

All our products are
available in a variety
of colours



Colours

We can supply in either mill finished (uncoated) or with a polyester powder coating (inside and out) in any specific colour to suit your project. Whether you choose a traditional or contemporary finish, polyester powders have excellent covering power, are wear resistant, durable and colourfast.



gmd
PENNINE

GMD Pennine Limited
Unit 1, Cross Fold, Blackburn BB2 3HD

T 0330 6600 461
E sales@gmdpennine.co.uk
W www.gmdpennine.co.uk